



chilton foliat community association
CHILTON FOLIAT COMMUNITY CLUB HOUSE

Building for the School, Community and the Future

October 2018

Dear Parents and Carers,

We are writing to update you on the latest news about our exciting new school building, which will house both our new classroom and, if we possibly can, a new and improved Club House.

A contributing factor to the success of the school is the provision of a breakfast club, after school club and holiday clubs, popular with the children and essential for working parents across the school community. As you are aware, this most valuable facility has been operating out of the old mobile classroom that is now very tired and is reaching the end of its life.

At the same time, a key challenge for the school is that one classroom (Sika Class for Years 5 and 6) is far too small to meet today's teaching needs, so we have successfully secured government statutory funding to aid building a new classroom on the site of our old mobile unit.

We have therefore secured government statutory funding to build a new classroom on the site of the old mobile classroom - currently the Club House - and home to Chilton Club Childcare.

To capitalise on economies of scale we have secured planning permission for a larger building, combining the new (fully funded) classroom with an adjoining 68m² multi-purpose community room (bigger than the current Club House) which will also serve as a space for village activities, enhancing links between the village and the school, and creating many opportunities for both.

Our plans are to build the new facility using an attractive cedar clad exterior fully in keeping with our rural school setting (pictures at the bottom of this letter). It is a pre-fabricated construction so will be quick to erect, with the schedule of works due to commence February 2019, ensuring that the element of government funding can be fully utilised by 31st March 2019.

With some time pressure, we are now on a fundraising mission to make the new Club House element of this building project a reality. **Our overall funding target is £85,000.**

Our project is registered with The Good Exchange, a fundraising platform which matches potential grant donors and community projects:

<https://app.thegoodexchange.com/project/12393/chilton-foilat-community-association/chilton-foilat-community-centre-club-house>

We are delighted that we have been successful in receiving match funding from one of the donors already; The Greenham Trust. This means that every £1 donated via this route will be matched with £1 from their generous donation, up to a maximum of £5,000.

With this in mind we are launching two fundraising campaigns, and we would be thrilled to have your support:

‘Pledge a plank!’

Donations via The Good Exchange platform are matched £1 for £1 via the link above, up to a maximum of £5,000. One of the ways that you can help us make our money go further is for you or your family to ‘pledge a plank’! For as little as £25, you will be able to see your name on the wall in the Club House and receive a certificate marking your contribution (to be presented during Celebration Assembly!) Of course we have a large pot to fill; every donation will make a difference, and we hope you can be generous, especially given that what you donate via The Good Exchange will effectively be doubled with the match funding!

To ‘pledge a plank’ costs £25 (Bronze), £50 (Silver) and £100 (Gold) using the link above.

‘Grow your fiver’

Mrs Turner and the children will be launching this campaign next week. Each child will receive £5 which they are encouraged to ‘grow’ through their ingenuity and enthusiasm. They will be tasked with thinking of different ways that they can use this money to make more money for this project e.g. Cake sale, car wash, etc. The initial £5 will be signed for during the parent evenings next week, with more details in the accompanying letter, attached for your reference.

We are very excited about these plans which we hope will all come to fruition this academic year. It is a challenging target, but we feel that with great effort and collective generosity, it is achievable!

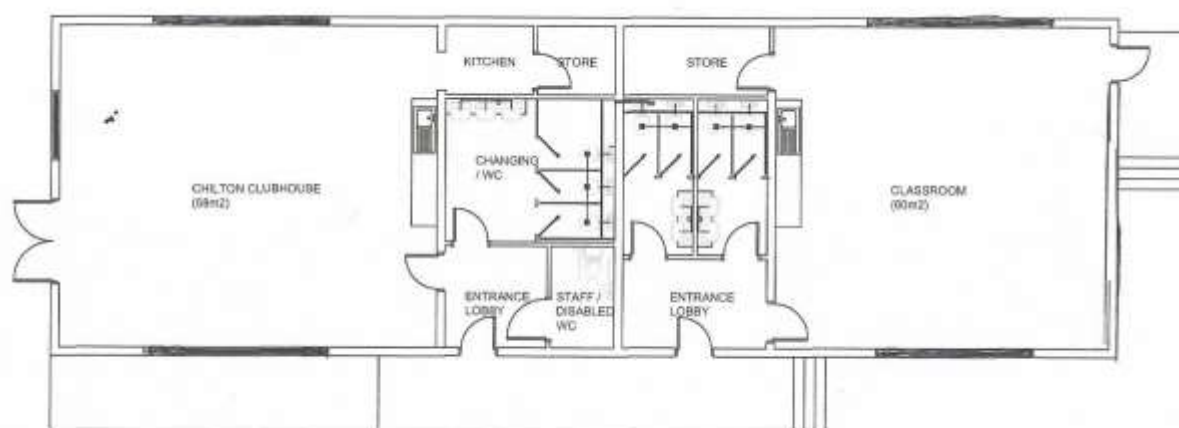
There is obviously lots of work involved, so if you would like to help, have any suggestions or questions then please contact Freya Priddey-Chan or Samantha Wolcough.

With best wishes

The Governing Body

Chilton Foliat Community Club House & Classroom

Below are photographs and a floor plan of the proposed building, which we hope you agree is in keeping with our rural setting. The finer details of the specification such as windows, access and roofline are still being finalised.



PROPOSED FLOOR LAYOUT
scale 1:100